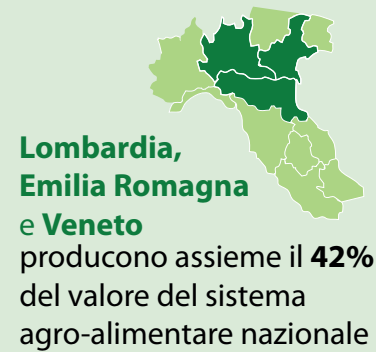
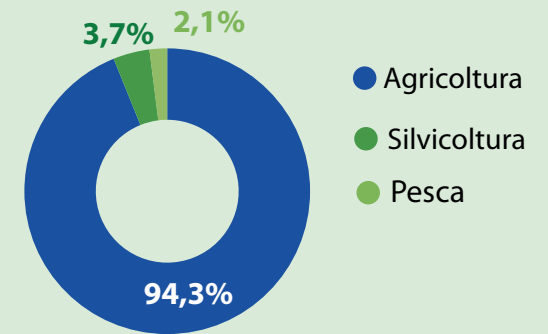


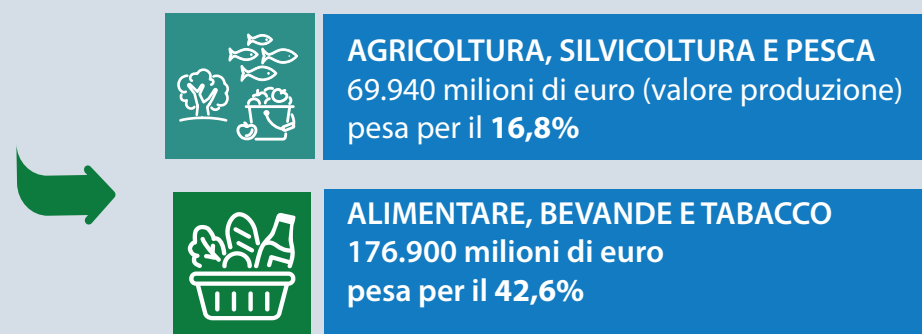
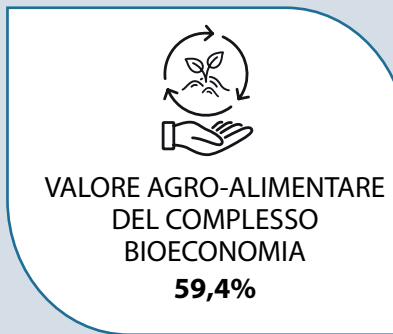
## Valore del sistema agro-alimentare



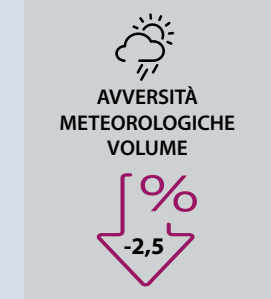
## Agricoltura silvicoltura e pesca



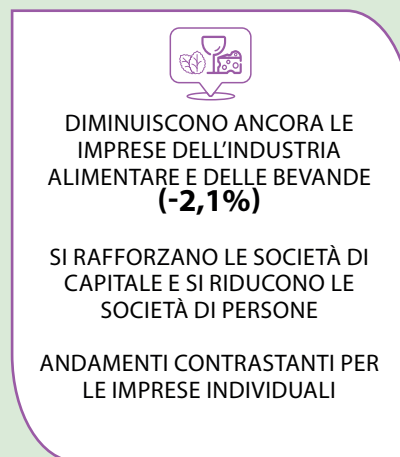
## Bioeconomia



## Produzioni vegetali



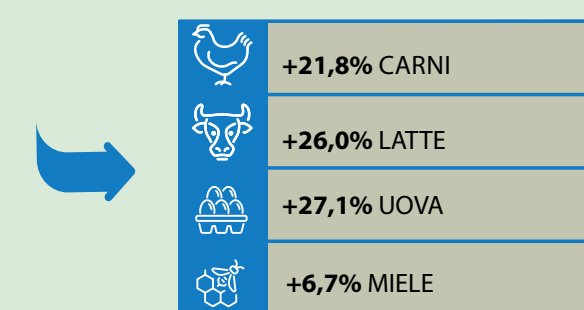
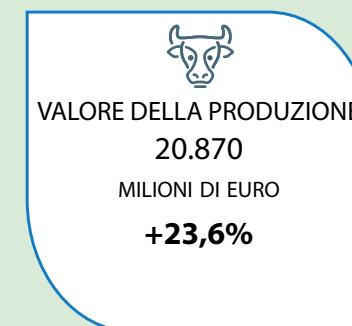
## Imprese agricole e industria alimentare



**Sicilia, Campania, Lombardia, Puglia, Emilia-Romagna** concentrano il **51,9%** delle imprese del settore alimentare

**Campania, Puglia, Sicilia, Veneto, Piemonte, Lombardia** concentrano il **60,6%** delle imprese del settore delle bevande

## Produzioni zootecniche



## La diversificazione



## Prezzi e costi

